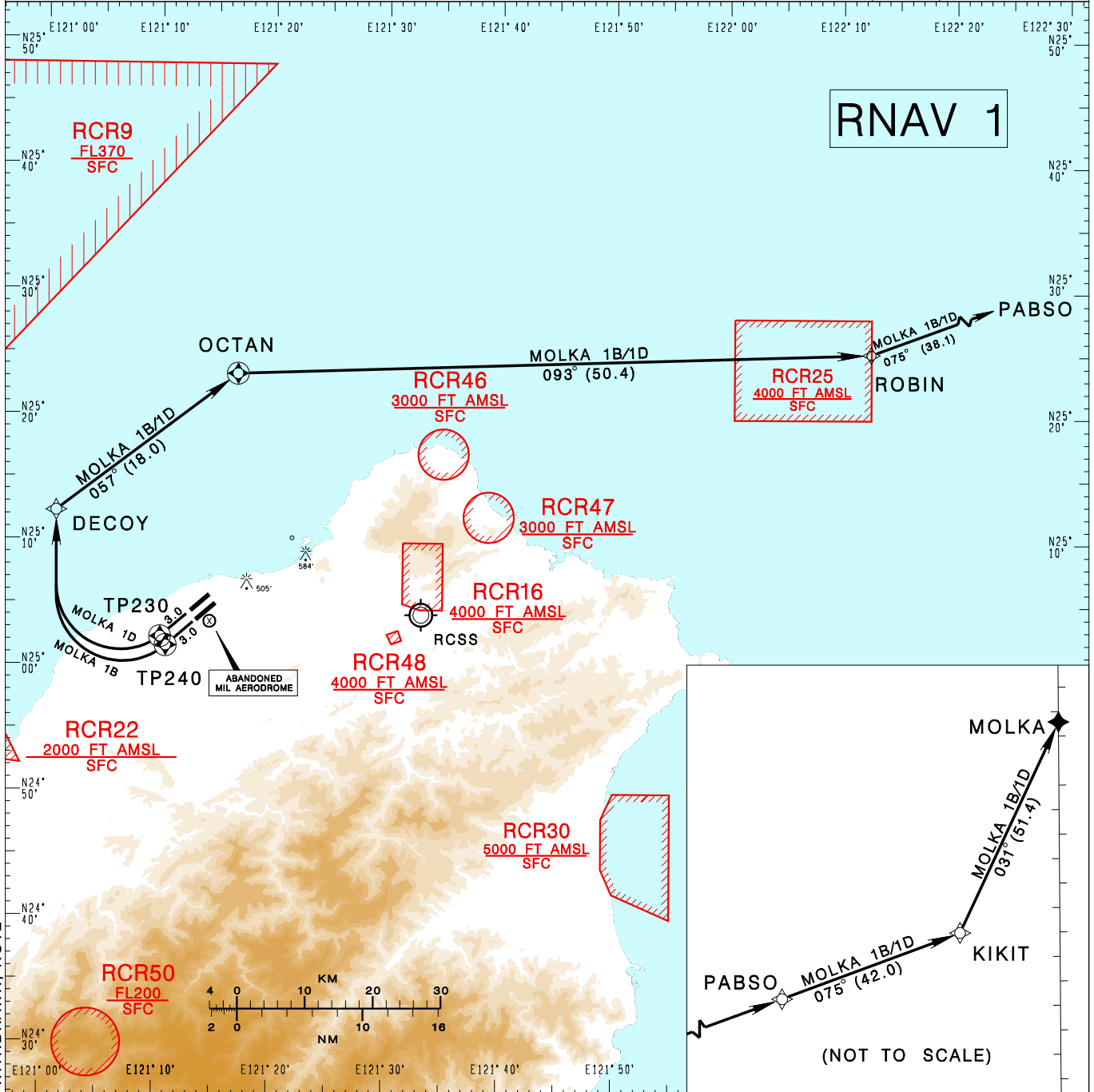


**臺灣桃園國際機場**  
TAIPEI/TAIWAN TAOYUAN INTL AD

RCTP SID  
MOLKA 1B RNAV(RWY 23L)  
MOLKA 1D RNAV(RWY 23R)

TAIPEI APP 125.1 128.5	TAIPEI TWR 118.7 129.3	ATIS 127.6	<p>9000'</p> <p>MSA ARP 25NM</p>	
Apt Elev: 108'		Trans Level: FL130		Trans Alt: 11,000'
BEARINGS ARE MAGNETIC; DISTANCES ARE NAUTICAL MILES; ELEVATIONS, HEIGHTS IN FEET				



CHANGES: RCR49 COMPLETELY WITHDRAWN: NOTE

**MOLKA ONE BRAVO RNAV DEPARTURE**  
Climb on RWY HDG until leaving 600ft, then direct to TP240, DECOY, OCTAN, then to ROBIN, PABSO, KIKIT, MOLKA.

**MOLKA ONE DELTA RNAV DEPARTURE**  
Climb on RWY HDG until leaving 600ft, then direct to TP230, DECOY, OCTAN, then to ROBIN, PABSO, KIKIT, MOLKA.

- NOTE**
1. RWY 23R/23L speed restriction of 210KT IAS maximum until established on track to DECOY.
  2. Minimum climb gradients required: RWY 23L 3.4% (210 ft/NM) until TP240.
  3. ATIS surveillance required.